



Editor
Steve O'Brien

Writer
John Williams

MSM Inc. Chairman
Charles Sanders

Maitland Community
Men's Shed welcomes
new members!

We are here to assist
our supporters and
friends.

Inside this issue:

The Shed Report	1
Inside Our Shed	2
Tech talk	6
Picture Gallery	7
Community Notice Board	8
Men's Health	11

The Maitland
Community Men's
Shed would like to
acknowledge our
major supporters



The Shed Report.....



Rumour has it, "that Rome wasn't built in a day", so, with that being the case just might have to call our new garage "Rome". The excavation for the slab and driveway was done, as well as the trench for the air line and electrical conduit and so after nearly 18 months we were on the way for the installation of the garage. All looking good, new gates installed and ready for lights and power to be installed.

The new timber rack installation to store timber is complete and has been filled with timber, fully labelled with the details of sizes on each piece, although, there remains more to be moved from within the Shed.

The project team led by Jim have been very busy cutting materials, painting them and putting together small picnic tables and a large mobile garden bed for a pre-school in the Rutherford area.

In the joinery area, we are looking forward

to welcoming back Wassa, who had a fall while visiting his Mum in Forbes. Wassa has been in Kurri Kurri Hospital having rehab after breaking his knee. Mean-while Glen and his crew have continued to restore the two rocking horses.

Maitland Athletics has supported the Men's Shed now for several years and the Board decided to offer the Club a perpetual trophy. The trophy is an Encouragement award and is presented to: -

An Athlete who displays; Persistence and Consistency for the development of the Skills to participate in "Little Athletics". This season's winner is Liam Kerr (9-year-old).

During the month, the Shed farewelled a long-time member, Gary Grant, who lost his battle with cancer.

To succeed in life, you need three things.

- A backbone
- A wishbone and
- A funny bone.

Take care and see you at the Shed.

Charlie Sanders - Chairman



Working With Children - A Call for More Certified Members.....

As the Maitland Community Men's Shed continues to build its involvement in community projects, particularly those involving schools and young people, it's important that we meet all the necessary requirements to ensure safety and compliance. One key requirement is the Working With Children Check (WWCC).

We're currently looking to increase the number of shed members who hold a valid WWCC. This certi-

the working
with children
check★



fication is essential for any shed member wishing to participate in school visits, children's workshops, or events where we may be interacting with young people. Without it, members will not be able to attend or take part in these activities.

The good news is that getting your Working With Children Check is free and straightforward for volunteers like us. The application can be completed online, and if you're unsure about the process, our IT team is more than happy to help you step through it.

Having more members with WWCC certification will give us greater flexibility and allow us to say "yes" more often when schools and youth organisations reach out to collaborate. It's a small step that can make a big difference in what we're able to offer our community.

If you're interested in applying or need assistance, please speak to one of our committee members or drop into the IT room during shed hours.

Let's all do our part to keep the shed active, involved, and ready to support the next generation.

Board Vacancy Update.....

The Board wishes to inform members that a vacancy has occurred following the recent passing of our fellow Shed and Board Member, Gary Grant. In accordance with our procedures, the Board considered whether to fill this vacancy by calling for Expressions of Interest (EOI) or to leave it vacant as a casual position as per our Constitution, until the next scheduled Board elections.

After careful consideration, a motion was passed at the recent Board meeting to leave the position vacant until the next election.

We thank members for their understanding and once



again acknowledge Gary's contribution and service to the Shed.

Successful Road Safety Workshop Held at the Shed.....



Road rules and driving conditions are constantly evolving, making it essential for all drivers, especially seniors, to stay informed. Staying up to date not only enhances safety but also helps maintain independence and confidence on the road.

In response to this need, our Shed reached out to Service NSW to organise a workshop aimed at helping our members navigate the ever-changing rules of the road. We were delighted when Maitland City Council's Road Safety Officer, Kate Taylor, confirmed she would visit the Shed to run a tailored session for senior drivers.

The session took place on Monday, April 7, and proved to be a highly informative and engaging event. Kate delivered a comprehensive Road Safety Program specifically designed to help older drivers keep pace with the latest NSW road rules, safe driving practices, and modern traffic conditions.

The workshop covered a range of valuable topics, including:

Understanding recent changes to road rules and

signage. Safe driving strategies for seniors. The impact of health on driving ability. Adapting to new vehicle technologies.

For many of our members, driving remains a vital part of everyday life, whether it's for errands, social outings, or visiting family. However, changes in vision, reaction time, and mobility can impact driving performance. The session offered practical advice on how to adjust driving habits to remain safe and confident behind the wheel.

The workshop was very well received, with members appreciating the clear, down-to-earth presentation and the chance to ask questions relevant to their own experiences. It was a great opportunity to refresh knowledge, build confidence, and reaffirm the importance of safe driving practices.

We thank Kate Taylor and Maitland City Council for their support and dedication to road safety. This valuable community program made a real difference, and we look forward to hosting similar events in the future.



Supporting Tomorrow's Tradespeople: A Donation to Hunter Trade College

Late last year, our shed took part in the Garage Sale Trail, Australia's biggest second-hand treasure hunt. This nationwide event spans two weekends and brings together thousands of garage sales, thrift markets, and pre-loved shopping experiences, all with the goal of reducing waste and encouraging sustainable reuse.

During the event, we welcomed a couple of visitors from Hunter Trade College in Telarah. The college is a senior secondary school (Years 11 & 12) and a Registered Training Organisation that provides hands-on learning and workplace training for students pursuing trade careers. With excellent facilities and a strong focus on practical skills, the college offers students a solid foundation in their chosen fields.

While chatting with members of our shed, including our Treasurer Brian Coggan, the visitors mentioned they were always on the lookout for quality hand tools. Many of their students, being school-aged and still in training, often struggle to afford their own gear.

Brian offered a helping hand, explaining that the



shed would be happy to donate any surplus tools we had on hand. Fast forward to last month - following a major reorganisation of our workshop, we gathered a range of tools no longer in use but still in great condition. Brian reached out to Hunter Trade College, and they were more than happy to accept the donation.

It's another great example of how our shed supports the local community. Whether it's recycling goods, sharing skills, or lending a hand, we're proud to contribute wherever we can.

Just a Little Joke.....

A young boy enters a barber shop and the barber whispers to his customer, "This is the dumbest kid in the world. Watch while I prove it to you."

The barber puts a five dollar note in one hand and two one dollar coins in the other, then calls the boy over and asks, "Which do you want, son?" The boy takes the dollar coins and leaves. "What did I tell you?" said the barber. "That kid never learns!"

Later, when the customer leaves, he sees the same young boy coming out of the ice cream parlour. "Hey, son! May I ask you a question? Why did you take the dollar coins instead of the five dollar note?" The boy licked his cone and replied: "Because the day I take the five dollar note the game is over!"



Birthdays This Month.....

Allan Anderson, Ray Broadbent, Brian Duffey, Kyle Dunn, Allen Hancock, Ian McDonald, Warren Morrow, John Paul, Mark Reeson, Wayne Robson, Bob Sablatura, Tony Straker and Phil Vale



In Fond Memory of Gary Grant.....

It is with deep sadness that we share the passing of our fellow Shed member and dear friend, Gary Grant. Gary passed away on Friday, April 4th, after a brief but courageous battle with an aggressive form of brain cancer known as Glioblastoma.

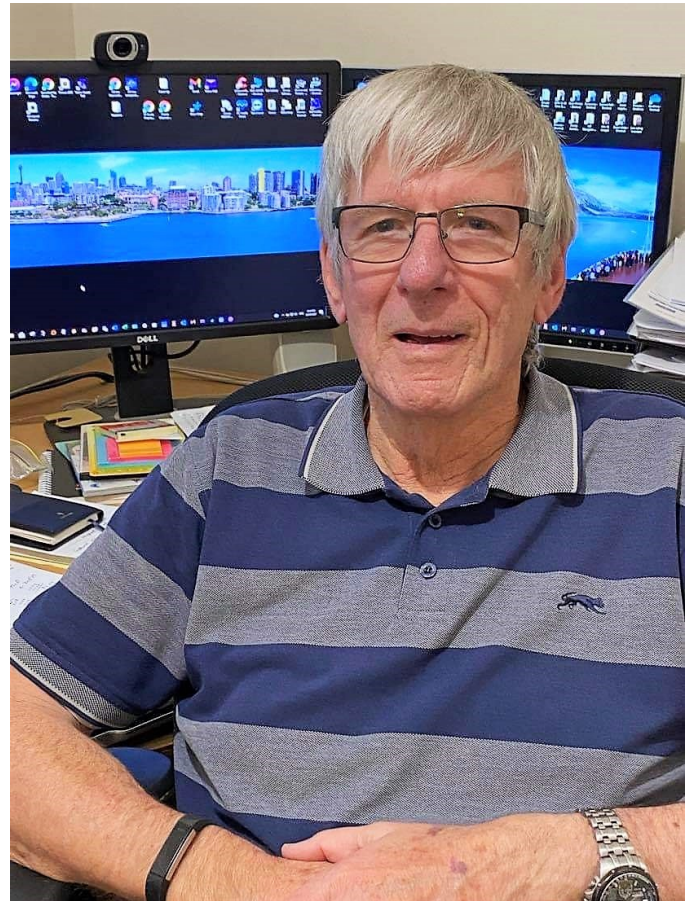
A funeral service to celebrate Gary's life was held at The Chapel of C.R. Smyth & Son, Rutherford, on Friday, April 11th. The chapel was filled to capacity, a true testament to the respect and affection so many held for him.

In a moving and heartfelt gesture, Gary's loving wife, Judy, honoured a promise she had made, to bring Gary back to the Shed. Following the service, the hearse made a special stop at our workshop. With the front roller door raised, Gary was welcomed by a large group of his fellow Shedders, who gathered to pay their final respects. It was a touching moment, full of respect and mateship, as we said farewell to one of our own.

Gary was an integral part of the Shed community. His passion for helping others, especially with anything computer-related, was unmatched. As the long-serving Director of IT on the Shed's Board, he was the go-to person for tech repairs and advice. Always cheerful and approachable, Gary brought warmth and good humour to every corner of the Shed. He especially loved a good game of cards and was a mate to everyone.

His presence will be deeply missed, but his legacy of kindness, service, and friendship will remain with us always.

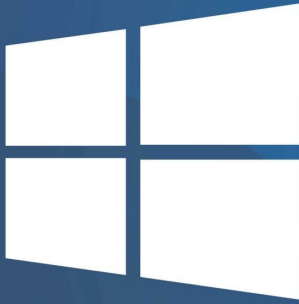
Gary is survived by his loving wife Judy, and his children and their partners: Anna and Josh, Naomi



and Matthew, David and Dale. He was a much-loved Poppy to Lara and Noah, and step-pop to Samuel and Grace. He is also remembered fondly by his siblings, Glenys, Darryl, and Robert.

Rest in peace, Gary. You will always be part of our Shed family.





Windows 10 End of Life: What You Need to Know...

If you're using a computer with Windows 10, it's important to know that Microsoft will officially end support for this version on 14 October 2025.

This doesn't mean your computer will suddenly stop working - it will still turn on and function as usual. However, Microsoft will no longer provide updates, technical help, or security fixes.

These updates are what keep your device protected from online threats such as viruses and scams. Without them, your computer could become more vulnerable over time.

What is "End of Support"?

When a version of Windows reaches what's called "end of support," it means:

- No more technical assistance from Microsoft.
- No more feature updates to improve performance.
- No more security updates to guard against new threats.

Windows 10 has had a good run - it's been around for nearly 10 years! But like all technology, it's time for an upgrade.

What Should You Do?

Microsoft recommends moving to Windows 11, their newest version, which offers better performance, modern features, and much stronger security protections.

Here's how you can prepare:

1. Check if your PC can run Windows 11.
2. Click on Settings > Privacy and Security > Windows Update. If your computer is compatible, you'll see the option to upgrade to Windows 11 for free.
3. If your computer isn't compatible, you can continue using Windows 10 after October 2025, but it will become less secure.
4. You might consider replacing your PC with a



newer model that comes with Windows 11 already installed.

Need a Hand?

If you're unsure about what to do next, don't worry, you're not alone. Reach out to a trusted friend, family member, or local tech support group. They can help you check your system and guide you through your options.

In Summary:

- * Windows 10 support ends on 14 October 2025.
- * Your PC will still work but will no longer receive updates or security protection.
- * Upgrading to Windows 11 is recommended for ongoing safety and support.
- * Start planning now to ensure a smooth transition.

Keeping your technology up to date is one of the best ways to stay safe online and help is always available if you need it.



May Picture Gallery.....



Maitland Community Markets.....

Mother's Day is just around the corner – and The Sweet Giftorium has the perfect gift to show Mum just how much she means to you!

From delicious treats and charming gift boxes to one-of-a-kind treasures, their stall is bursting with heart-felt finds she'll adore. You'll find them at our next Maitland Community Markets – don't miss out!

Whether you're on the hunt for that special something or simply love exploring local stalls, the Maitland Community Markets are the place to be. With an incredible range of goodies, a vibrant atmosphere, and something for everyone, it's a perfect Sunday outing.

Join us at the Maitland Community Markets – held on the first Sunday of every month (excluding January) at the Maitland Showground, Blomfield Street, South Maitland.

Proudly run by the Hunter River Agricultural & Horticultural Association, the markets support the local community, with all fees going towards market operations and maintaining the historic showground.

Conveniently located, the showground is easy to reach by road from across NSW – via the Pacific and Sydney freeways or the New England and Golden Highways. Visitors from Newcastle and the Hunter Valley can also arrive by car or train.

With 84 acres of open space, including indoor and outdoor stalls, entertainment areas, and quiet spots to relax, the Maitland Community Markets offer a refreshing and fun alternative to busy shopping centres.

Street Eats - Maitland.....

Embrace the chill at Street Eats, Winter Fest! On the eve of Winter, warm up your bellies with hearty food, hot drinks and cozy music. Bring the family or catch up with friends with a picnic and a bite to eat.

Street Eats is a Council run program that opens the doors to mobile food in public places.

This event varies in location, time and food trucks from month to month and is subject to change, so to stay up to date be sure to follow the My Maitland Facebook page.

When: 30th May from 5.00 pm - 8.00 pm

Where: Harold Gregson Reserve, High Street Maitland

Free Entry



Please note: There's no ATM on site, so bring cash – although many stallholders now accept EFTPOS.

Come along, discover local treasures, and enjoy a great day out!

When: Sunday the 4th of May from 9am -1pm

Where: Maitland Showground, South Maitland

More Info Visit:

www.maitlandcommunitymarkets.com.au



More Info: Ph 02 4931 2801

Email: place.activation@maitland.nsw.gov.au

Get Ready for Adventure at the Hunter Valley Outdoor Show!



The Hunter Valley Outdoor Show is rolling into Maitland Showground and it's set to be the ultimate event for lovers of the great outdoors! With over 300 exhibitors, this action-packed show is the number one outdoor lifestyle event in the region and it's bigger and better than ever.

Whether you're a seasoned adventurer, weekend camper, fishing fanatic, or just looking for a fantastic day out with the family, this event has something for everyone.

Explore a huge range of 4WD vehicles, accessories, and off-road equipment. Get expert advice, compare models, and start planning your next rugged getaway.

Camping enthusiasts will be in heaven with the latest tents, swags, trailers, and cutting-edge camping gear. From compact gadgets to luxury motorhomes, you'll find everything to elevate your outdoor experience.

Foodies can head to the camp cooking zone to watch skilled chefs whip up mouth-watering meals using traditional camp ovens and bush cooking techniques. You might even pick up a few new recipes for your next trip.

Anglers can discover the newest fishing gear, learn about local fishing spots, and pick up pro tips from expert fishers in dedicated demonstrations and talks.

Adrenaline junkies don't miss the extreme sports arena where talented stunt riders will leave you breathless with their jaw-dropping tricks and gravity-defying stunts.

There'll also be live entertainment, kids' activities, and plenty of places to grab a bite to eat or chill out in shaded seating areas. With free car parking and all

-day entry, it's a fun, affordable day out for the whole family.

One of the big draws of the Hunter Valley Outdoor Show is the incredible variety of products from the tiniest outdoor gadgets to grand motorhomes. Whether you're browsing, buying, or just getting inspired, there's something to capture everyone's imagination.

Mark your calendars - the Hunter Valley Outdoor Show is coming soon to Maitland Showground. Don't miss this chance to explore, learn, shop, and experience the very best of outdoor living.

When: Friday the 23rd of May to Sunday the 25th of May 2025

Where: Maitland Showground, Blomfield Street Maitland.

More Info:

Email: office@maitlandshowground.com.au

Phone: (02) 4933 5052



Tocal Field Days: Celebrating the Spirit of Rural Australia.....

Tocal Field Days
May 2, 3 & 4 2025



tocal
field days

Fun for the WHOLE
family

What's On
Heavy Machinery
Food Stalls
Wood Chop
Farm Skills
Tractor Ride
Innovations
Livestock
& more

Find out more
tocalfielddays.com



Established in 1984, Tocal Field Days is the premier agricultural event in the Hunter, Newcastle and Central Coast Regions.

Step into the heart of rural life at Tocal Field Days, a beloved annual event that has been bringing together farmers, families, and rural enthusiasts for over 40 years. Set against the stunning backdrop of the Hunter Valley, Tocal Field Days is a showcase of all things agriculture, innovation, and country living.

From the latest in farm machinery to sustainable farming practices, the event offers an exciting mix of exhibitors, demonstrations, and hands-on experiences. It's the perfect opportunity to explore new technologies, pick up practical tips, and gain fresh insights into the future of farming. Whether you're interested in livestock, renewable energy, or just love the country atmosphere, there's something here for everyone.

Tocal Field Days isn't just for those on the land - it's an event the entire family can enjoy. Children will love the animal petting areas, interactive displays, and engaging activities designed just for them. Meanwhile, adults can explore thought-provoking talks, browse stalls filled with local produce and handmade goods, and soak in the friendly, down-to-earth vibe that makes this event so special.

More than just a field day, Tocal is a celebration of

rural Australia. It's about bringing people together, sharing ideas, and fostering a deeper connection to the land and to each other. Whether you're an agricultural professional, a hobby farmer, or simply curious about life in the country, you're warmly invited to be part of this enduring tradition.

Join us at Tocal Field Days and experience the best of rural life, all in one place.

When: 2nd - 4th of May from 9.00 am - 5.00 pm

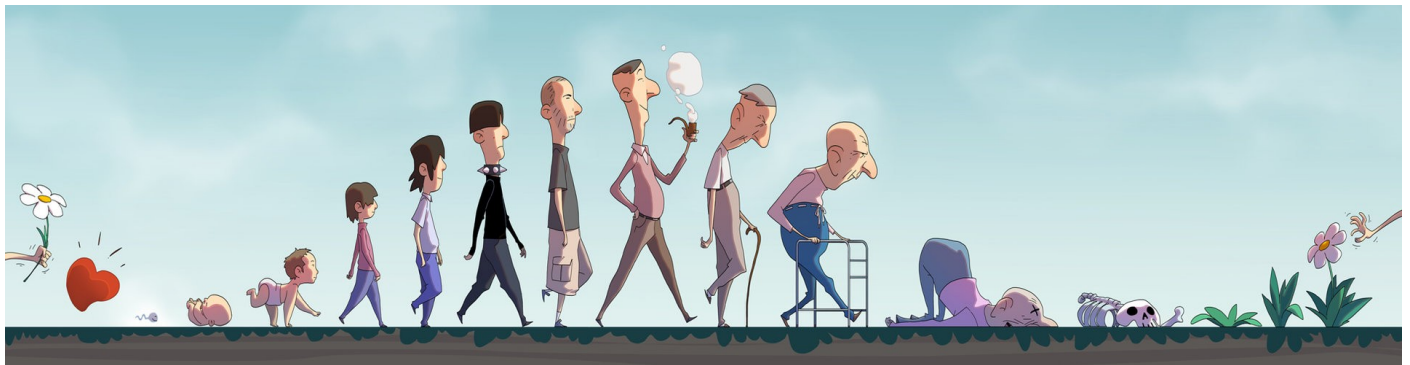
Where: 815 Tocal Road Paterson

More Info: Ph: 02 4939 8820

Email: fielddays@tocal.com



The Circle of Life.....



As my grandson's eighth birthday approached, our conversations revolved around one pressing question - what gift would make his special day unforgettable? With the seriousness only an eight-year-old can muster, he informed his Nanny that he had wanted a pet goldfish for "all of his life."

His birthday arrived, bringing not just excitement but a dream fulfilled. He became the proud owner of a small aquarium and two goldfish - Neil, named after Neil Armstrong, and Patch, a harlequin-coloured swimmer. He eagerly explained their feeding routine, how to test the water, and why watching his fish was far better than watching TV.

For three joyous weeks, Neil and Patch thrived. Then, suddenly, Patch began swimming on his side, then upside down, lingering at the bottom of the tank. Neil followed soon after. My grandson, hopeful that a trip to the vet would solve their troubles, was dismayed to hear that his fish might 'pass.' Despite saltwater baths and careful nursing efforts, first Patch, then Neil, succumbed.

Heartbroken, he chose a sunny spot in the garden

for their final resting place, laying their small box to rest with the ceremony they deserved. Over the next week, he reflected on their short lives, wondering if he had made mistakes. He questioned himself, fearing he hadn't been a good pet owner or cared enough.

Yet, within his reflections lay something beautiful - a deep love, responsibility, and a newfound understanding of life's delicate balance. While Neil and Patch's time was brief, their presence left an imprint that will stay with him forever. If I ask him now about this experience, he describes it with wisdom and clarity as 'The Circle of Life' (thank you, The Lion King).

Looking back on this moment in a child's life, I'm reminded that loss is always difficult. Yet, it is moments like these that shape how we understand responsibility, empathy, and love. The hardest losses teach us how to honour and celebrate, creating memories that we carry forward forever.

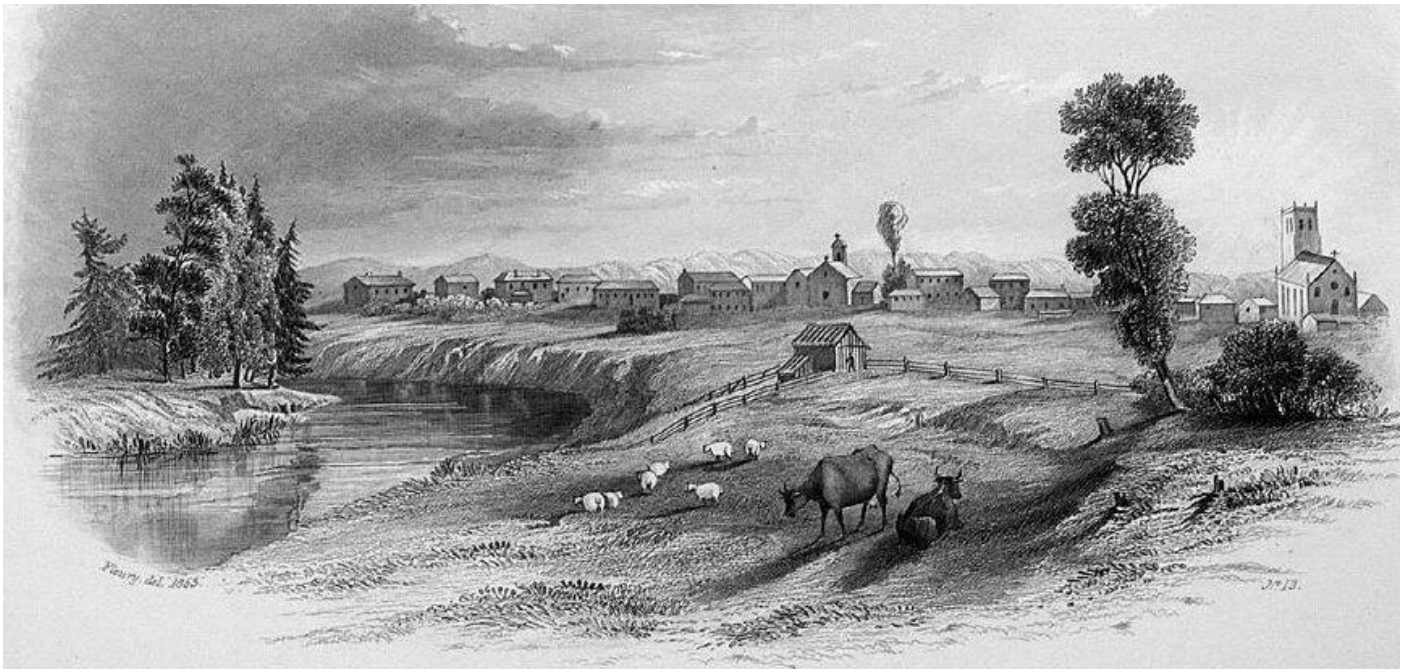
Writer: **John Williams** - Men's Shed Reporter



Remember, "This Is Your Shed". Be PROUD Of It And Contribute Where You Can.



Early Days of the Maitland District: From Forest Plains to Farming Settlement



The Maitland district's European history can be traced back to the early 1800s, when explorers and surveyors first arrived in the region. In 1801, Lieutenant James Grant sailed into the area that would one day become Maitland. He named the broader region Schancks Forest Plains in honour of John Schancks, the designer of the government sloop HMS Lady Nelson.

That same year, HMS Lady Nelson carried Lieutenant-Colonel William Paterson and a survey party to map the landscape stretching from Lake Paterson to the western side of what is now Bolwarra Heights. Around this time, Ensign Francis Barrallier, also undertook mapping of the lower reaches of the Hunter and Williams Rivers, later extending his efforts to include the Paterson River.

While an initial attempt to establish a penal settlement at King's Town (later known as Newcastle) failed in 1801, it laid the groundwork for a more permanent presence. By 1804, a penal settlement was successfully established in Newcastle, with convict work gangs beginning extensive timber-cutting operations, particularly red cedar, along the lower Hunter River and its tributaries. This marked the beginning of major ecological change, especially across the floodplains.

By around 1810, timber-getters had established a base camp at the confluence of the Hunter River and Wallis Creek, near the site of today's Maitland Regional Athletics Centre. In 1812, Governor Lachlan Macquarie authorised the settlement of

five individuals, four convicts and one free man, on 30-40-acre plots at Paterson's Plains, upstream of present-day Woodville.

In 1815, surveyor James Meehan, guided by Aboriginal people, followed an ancient Indigenous pathway from the Hawkesbury River to the Hunter Valley. This route would later form the foundation of the Great North Road and Buchanan Road.

Governor Macquarie paid a visit to the region in 1818. During this tour, he officially named the area Wallis Plains in honour of James Wallis, then Commandant at Newcastle. Macquarie also ordered the establishment of a farming settlement at Wallis Plains to further consolidate the colonial presence in the district.

Between 1818 and 1819, approximately a dozen settlers took up unsurveyed 30 to 40-acre blocks between the current sites of Raworth and the Belmore Bridge. A small military detachment was stationed in the area to provide protection from bushrangers and resistance from local Aboriginal groups.

In 1819, Wallis Plains experienced two major floods, early reminders of the powerful and unpredictable nature of the Hunter River system.

These early events laid the foundation for what would eventually become the vibrant city of Maitland, shaping both its geography and its community for generations to come.

Continued Next Edition